

SCOUTS CANADA STANDARD OPERATING PROCEDURES

SECTION 8000 – UNIFORMS AND INSIGNIA

8000 – UNIFORMS

It is expected that section members, activity leaders, Scouters-in-training, Scouters and Executive Staff members will wear uniform or an appropriate activity dress on all Scouting occasions and activities.

Only members of Scouts Canada may wear the official uniform.

8000.1 – Beavers, Cubs and their Section Leaders

	Beaver	Cub	Section Leaders
Footwear		Black or brown shoes	Black or brown shoes
Belt		Tan web	Tan web
Pants/ Skirt		Navy blue	Navy blue
Shorts		Navy blue	Navy blue
Shirt	Beaver T-shirt (optional)	Tan shirt	Tan shirt
Vest	Beaver vest		
Sash		Yes	
Epaulettes		Yes	Section colour with I.D.
Necker	Light blue or group neckerchief, cross-over style	Group or National neckerchief	Group, National, or Gilwell neckerchief
Hat	Coby style with Beaver Badge		

NOTES:

- Group neckerchief – design, colour and material to be determined by the Group/Section committee and approved by the next senior Council.
- Sash should not be worn during games, boating, camping or hiking.
- Activity T-shirts may be worn when appropriate to activity.
- The Scouts Canada uniform no longer includes official headwear. A field hat and toque, as supplied by Scouts Canada's Retail Services, are the only authorized headwear for wear with the uniform when conditions warrant.

8000.2 – Scouts, Venturers, Rovers and their Section Leaders

Scouts Canada offers two uniform options, available to Scouts, Venturers, Rovers, SIT's and adult members of the sections. Individual youth and their parents will make the choice of uniform wear on all occasions.

Program Activity Uniform			Formal Activity Uniform		
	T-shirt	Tan Shirt		Shirt/Tie	Tan Shirt
Footwear	As appropriate	As appropriate	Footwear	Black or Brown shoes	Black or Brown shoes
Belt	Optional	Optional	Belt	Optional	Tan web
Pants	Navy blue or Tan	Navy blue or Tan	Pants/ Skirt	Navy blue or Tan	Navy blue or Tan
Shorts	Navy blue or Tan	Navy blue or Tan	Shorts	Navy Blue or Tan	Navy Blue or Tan
Shirt	Green, Grey or Orange	Tan	Shirt/Blouse	White	Tan
Vest	Bring On the Adventure Green and Black fleece	Optional	Vest	Optional	Optional
Sash (youth only)	Optional *	If appropriate **	Sash (youth only)	Optional	Yes **
Epaulettes	N/A	Yes	Epaulettes	No	Yes
Necker (Gilwell necker for adults only)	Group, National or Gilwell necker if appropriate.	Group, National or Gilwell necker if appropriate.	Necker (Gilwell necker for adults only)	No	Group, National or Gilwell necker if appropriate
			Tie	National Tie	National Tie optional (n/a for Scouts)

NOTES:

- Group neckerchief – design, colour and material to be determined by the Group/Section Committee and approved by the next senior Council.
- Sash should not be worn during games, boating, camping or hiking.
 - * Refer to Badge Placement on Sash (new uniform option) diagram.
 - ** Refer to section uniform diagrams.
- The Scouts Canada uniform no longer includes official headwear. A field hat and toque, as supplied by Scouts Canada's Retail Services, are the only authorized headwear for wear with the uniform when conditions warrant.
- Female members may substitute the section lapel pin in the Formal Activity uniform for the tie.

8000.3 – Program Activity Uniform:

This uniform is appropriate to wear to weekly meetings, to camps, while traveling and on outings.

8000.4 – Formal Activity Uniform:

This uniform is appropriate to wear to major award ceremonies, civic meetings, and Remembrance Day ceremonies.

8000.5 – Information for Scouters:

The decision on which specific combination of clothing items to wear is an individual choice made by the youth. In conjunction with the new uniform for youth members, the following are guidelines for appropriate dress by leaders.

- (i) Leaders are permitted to wear the new activity uniform options when an event has been designated as appropriate for the activity uniform option. However, leaders may wear the traditional uniform if they choose.
- (ii) For formal occasions, leaders may wear the shirt and tie option only if all youths in their section are wearing shirt and tie, or the appropriate alternatives for female members. If any youth wears a traditional uniform, all Scouters should do so as well.

8000.6 – Non-Section Adult Uniform / Standard Business Dress

Non-Section Adult Uniform		Business Dress	
Footwear	Black or brown shoes	Footwear	Black shoes
Belt	Tan coloured web	Belt	Black
Pants/ Skirt	Navy blue	Pants/ Skirt	Charcoal grey
Shorts	Navy blue	Shorts	N/A
Shirt/Blouse	Tan shirt	Shirt/Blouse	White shirt/blouse
Vest / Outer wear	Optional	Vest / Outer wear	Navy blazer with crest
Epaulettes	Navy	Epaulettes	
Necker	Group, National, or Gilwell necker	Necker	
Tie	Navy tie	Tie	Corporate tie
Note: <ul style="list-style-type: none">Registered adults, servicing Scouts, Venturers and Rovers, may wear any uniform options available to Section Scouters.			

8000.7 – Service Scouters:

As determined by the supervising Council, Service Scouters may wear the National neckerchief, Council neckerchief or the Gilwell neckerchief.

8000.8 – Activity Leaders/Scouters-In-Training:

Activity leaders/Scouters-In-Training may wear the uniform of the section to which they belong, or alternatively, the adult Scouter uniform. In the event they do not wear a uniform, they shall wear appropriate activity dress.

8000.9 – Keoo:

While attending colony meetings the Cub uniform is worn and a silver coloured neckerchief with a Keoo badge affixed to the point.

8000.10 – Kim:

While attending pack meetings the Scout uniform is worn and a yellow coloured neckerchief with a Kim badge affixed to the point.

8000.11 – SCOUTSabout:

Members do not wear a uniform. Optional clothing for SCOUTSabout members includes t-shirts, sweatshirts, hats, etc.

8000.12 – Extreme Adventure:

Members do not wear a uniform. Optional clothing for Extreme Adventure members includes t-shirts, sweatshirts, hats, etc.

8000.13 – Other Items:

Other items of dress and equipment carried by Scouts Canada's Retail Services may be worn when appropriate and at the discretion of each section.

8000.14 – Headwear:

The Scouts Canada uniform no longer includes official headwear. A field hat and toque, as supplied by Scouts Canada's Retail Services, are the only authorized headwear for wear with the uniform when conditions warrant.

8001 – INSIGNIA

Only authorized insignia may be worn on the uniform.

8001.1 – Chaplain:

The Chaplain's cloth badge is worn above the right breast pocket of the tan uniform.

8001.2 – Beaver Lodge Patch:

Worn on the right pocket of the vest. The colour and shape is determined by the members of the lodge.

8001.3 – Wolf Cub Six Patch:

A triangular patch centered on the right sleeve of the shirt just below the Council badge. A different coloured patch is worn by each six in the pack.

8001.4 – Patrol Identification:

Each patrol may select a patrol name that has particular significance to the area in which they live or special meaning to patrol members. The patrol emblem may be selected from crests available through Scout Shops and is worn on the right sleeve of the tan Scout uniform.

8001.5 – Link Badge:

A youth member who has participated in one or more of the section programs may wear all the appropriate Link Badges on being invested into the next higher age level program. (See appropriate section in handbook for requirements.)

8001.6 – World Emblem:

Worn above the left breast pocket of the tan uniform.

8001.7 – Provincial/Territorial Badge:

A badge to signify the province/territory of residence, worn on the upper left sleeve.

8001.8 – Council Emblem:

A design approved by the Executive Commissioner. Worn on the upper right sleeve of the tan uniform, just below the Area emblem. For Beavers, worn on the left breast just below the World Emblem.

8001.9 – Area Service Emblem:

Of a design approved by the Council Commissioner. Worn on the right sleeve of the tan uniform just below the Group emblem.

8001.10 – Group Emblem:

Name and number of Group in a design approved by the Group/Section committee, worn at the top of the right sleeve of the tan uniform. Only the emblem of the Group in which the wearer is currently active may be worn. May be worn by all uniformed members of a Group.

8001.11 – Service Stripes:

A member may indicate total length of service by wearing one or more service stripes. Service is indicated as follows:

Silver Service Stripe—1 year

Gold Service Stripe—5 years

For each year of service a silver service stripe may be added, until five years of service has been reached, when a gold stripe will replace the silver stripes. Thereafter, a silver stripe may be added for each further year of service until ten years is achieved, when a gold stripe would again replace the silver stripes. Service in the Girl Guide Movement may be included.

8001.12 – Rank Badges:

Wolf Cub Sixer - yellow epaulette with two green stripes.

Wolf Cub Second - yellow epaulette with one green stripe.

Patrol Leader - green epaulette with two yellow stripes.

Assistant Patrol Leader - green epaulette with one yellow stripe.

Sea Scout Patrol Leader - white epaulette with anchor and two blue stripes.

Sea Scout Assistant Patrol Leader - white epaulette with anchor and one blue stripe.

8001.13 – Other Insignia:

The Canada Cord Pin may be worn by former youth members of Guiding, above the right breast pocket on the tan uniform, until such time as the Queen's Venturer Award is earned.

8001.14 – Wood Badge Basic Development:

A metal tie tack, in the shape of a fleur-de-lis, worn either in the tie or, if a neckerchief is worn, on the right upper edge of the left shirt pocket of the tan uniform, by all Scouters who have completed Wood Badge Basic Development.

Scouters who have completed Basic Development and who wear a neckerchief may wear the Wood Badge woggle.

8001.15 – Wood Badge Advanced Development:

A tie tack embodying the above symbol superimposed on a gold maple leaf. This tie tack replaces the previous tack and is worn in the same manner.

Those who have completed Wood Badge Advanced Development but prefer to wear a neckerchief may wear the Gilwell neckerchief and Wood Badge woggle.

8001.16 – Agency Badges:

Members who hold a current certificate awarded by St. John Ambulance Association, Lifesaving Society or Canadian Red Cross Society may wear the appropriate agency badge on the tan uniform or in the designated area on sash.

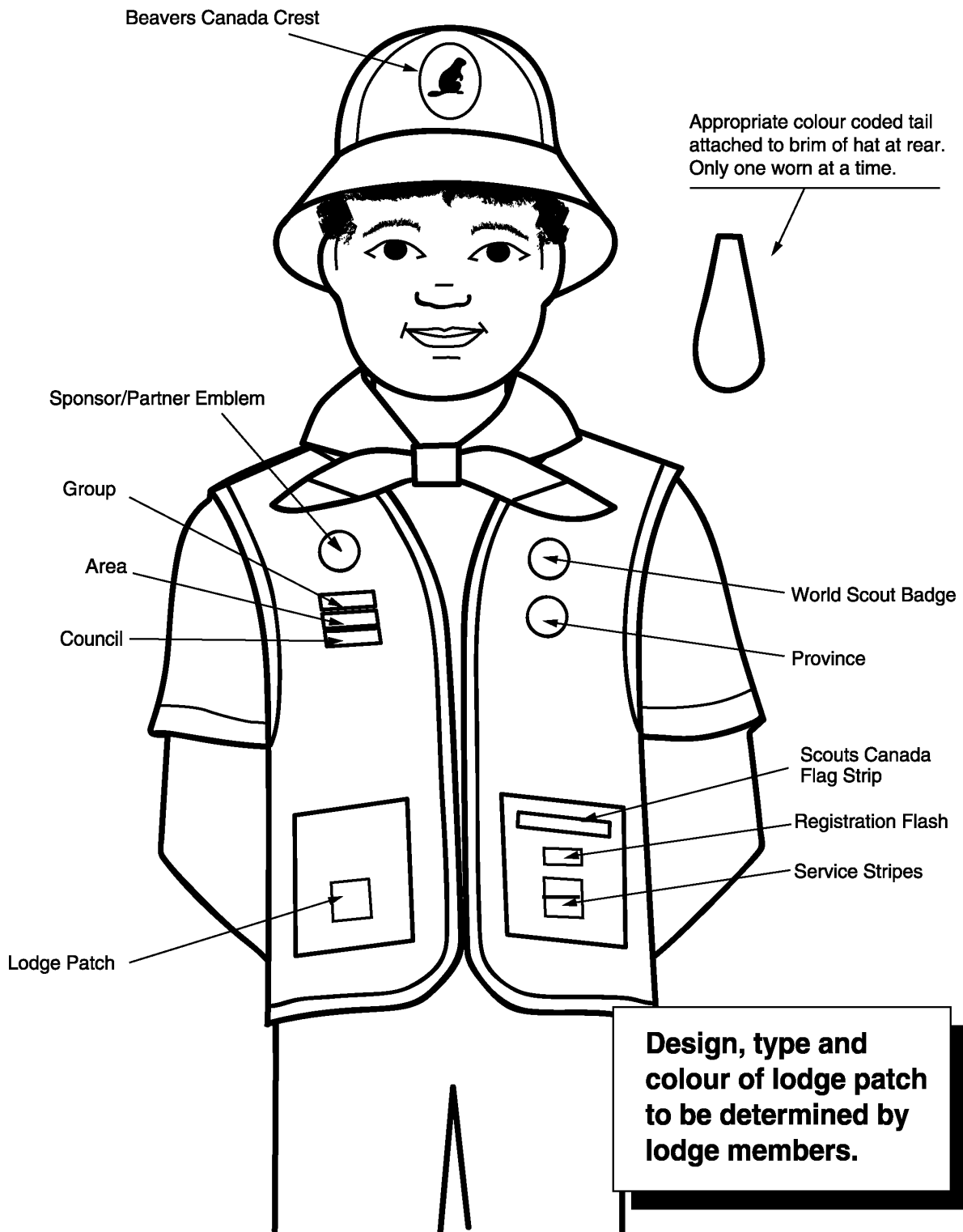
Only the most senior badge earned from each agency may be worn, and such badge(s) is/are to be worn on the right sleeve of the tan uniform just above the cuff or on short or rolled sleeves just above the hem.

Agencies require periodic re-testing to ensure the skill level is maintained and updated. Members should remove badges when no longer qualified by the agency to wear them.

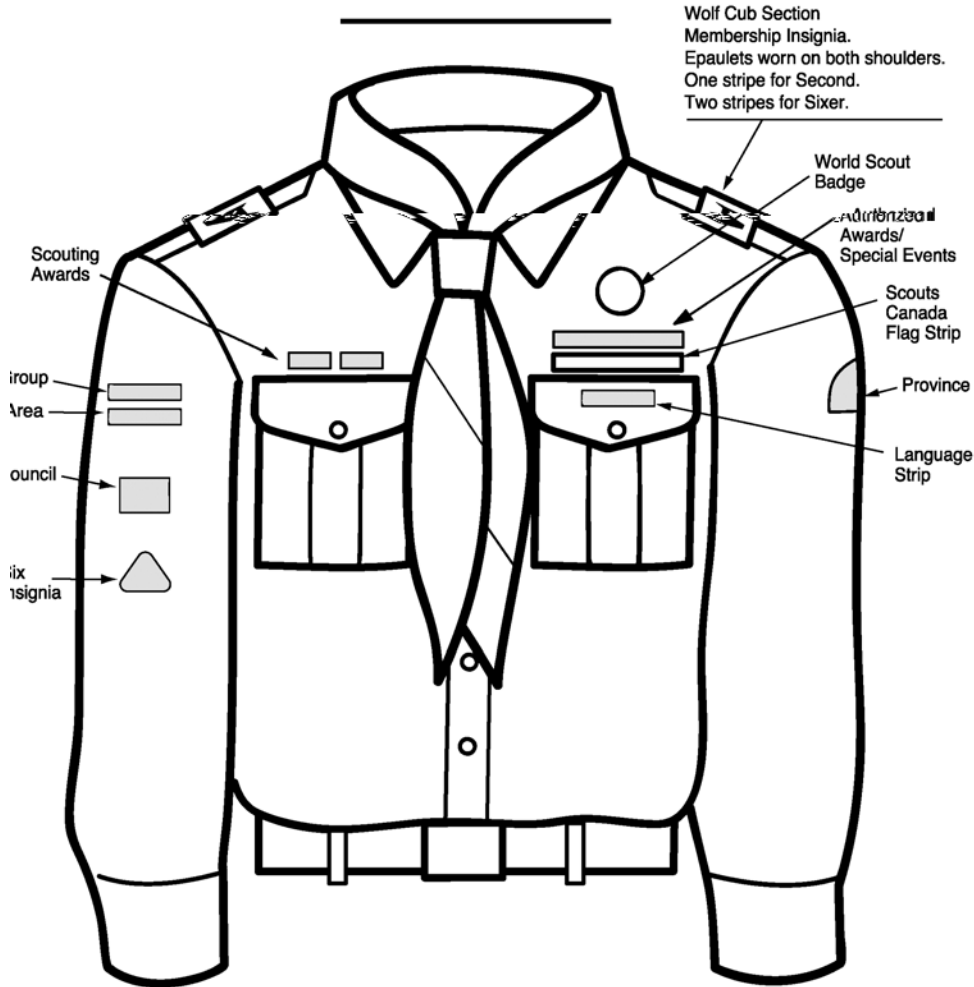
8001.17 – Uniform Diagrams:

See appropriate uniform page below.

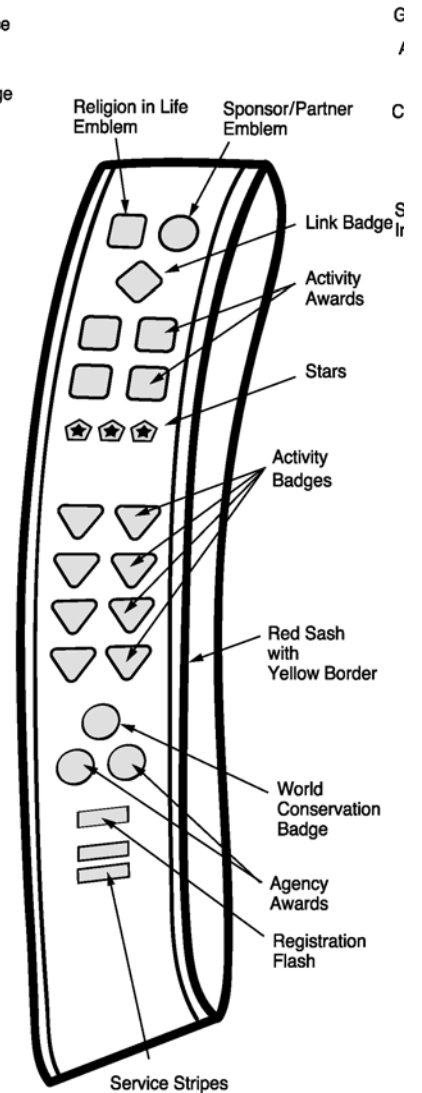
BEAVER



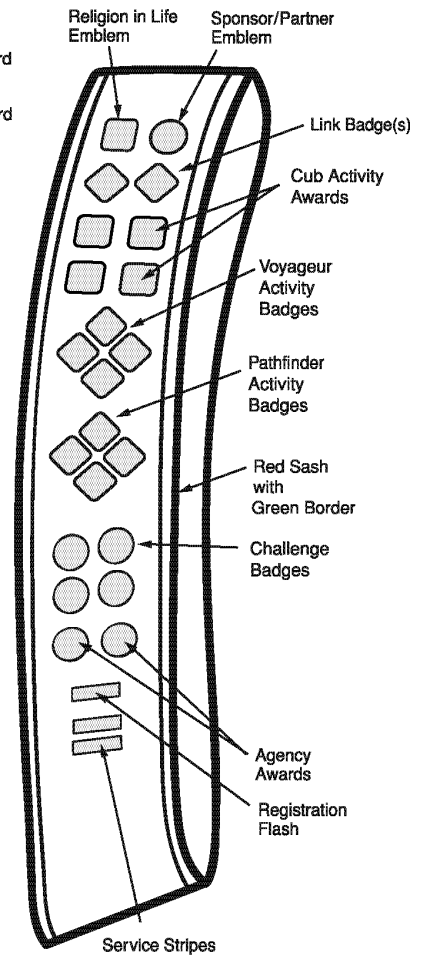
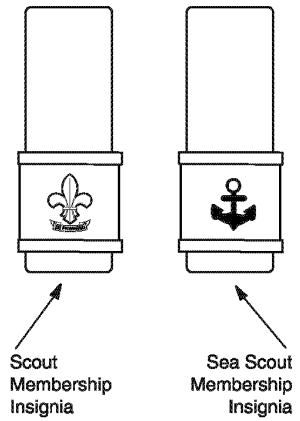
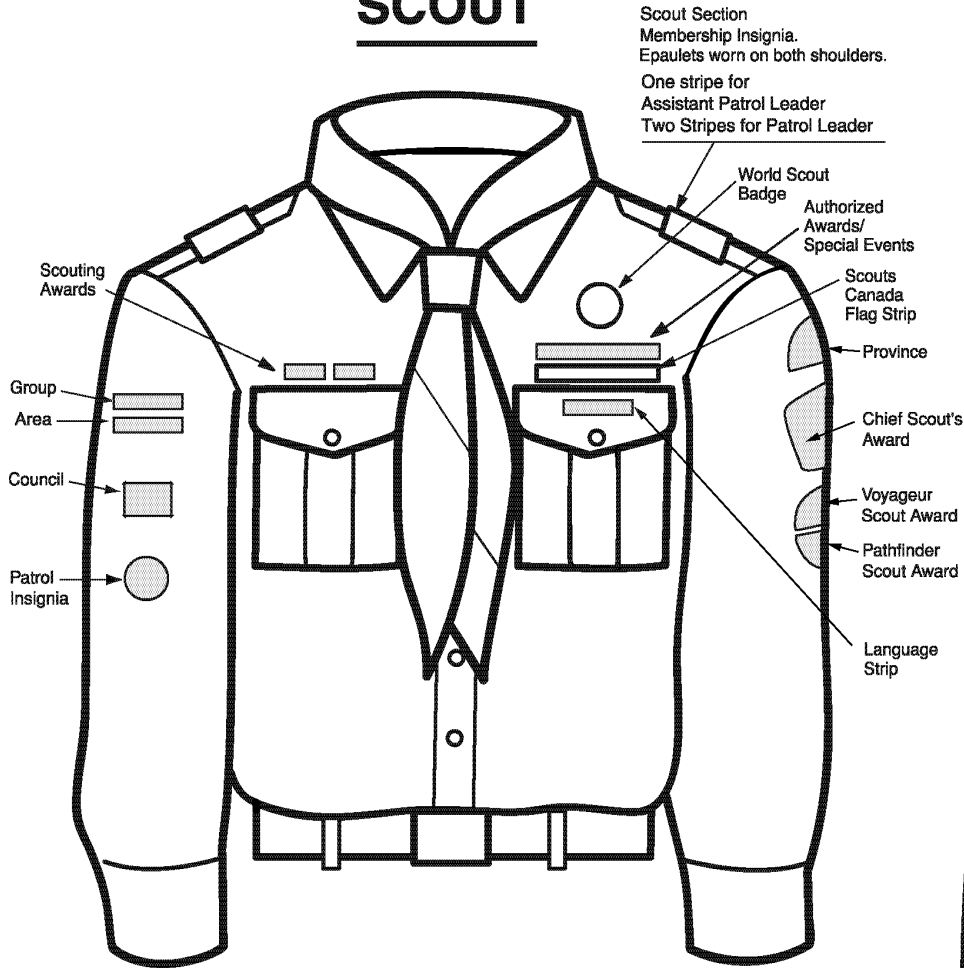
WOLF CUB



Activity Badges may be worn on both sides of the sash.



SCOUT

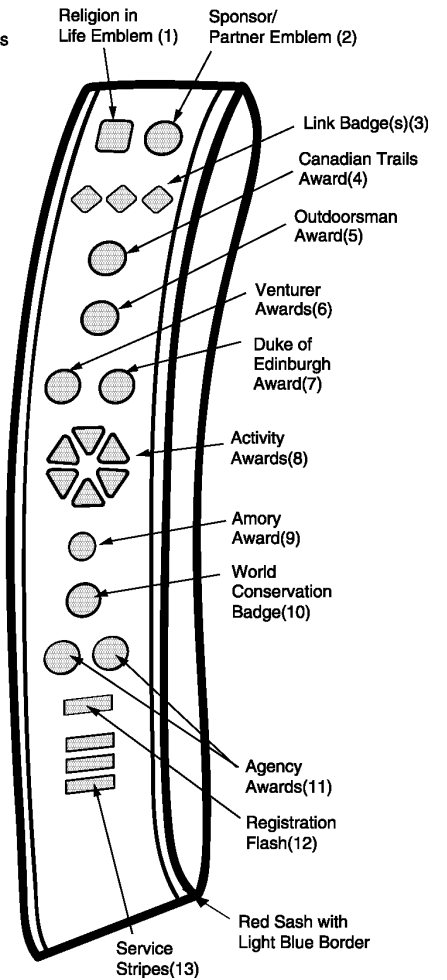
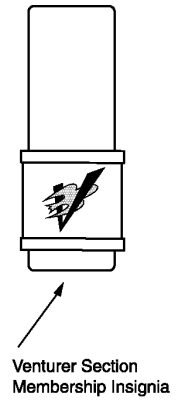
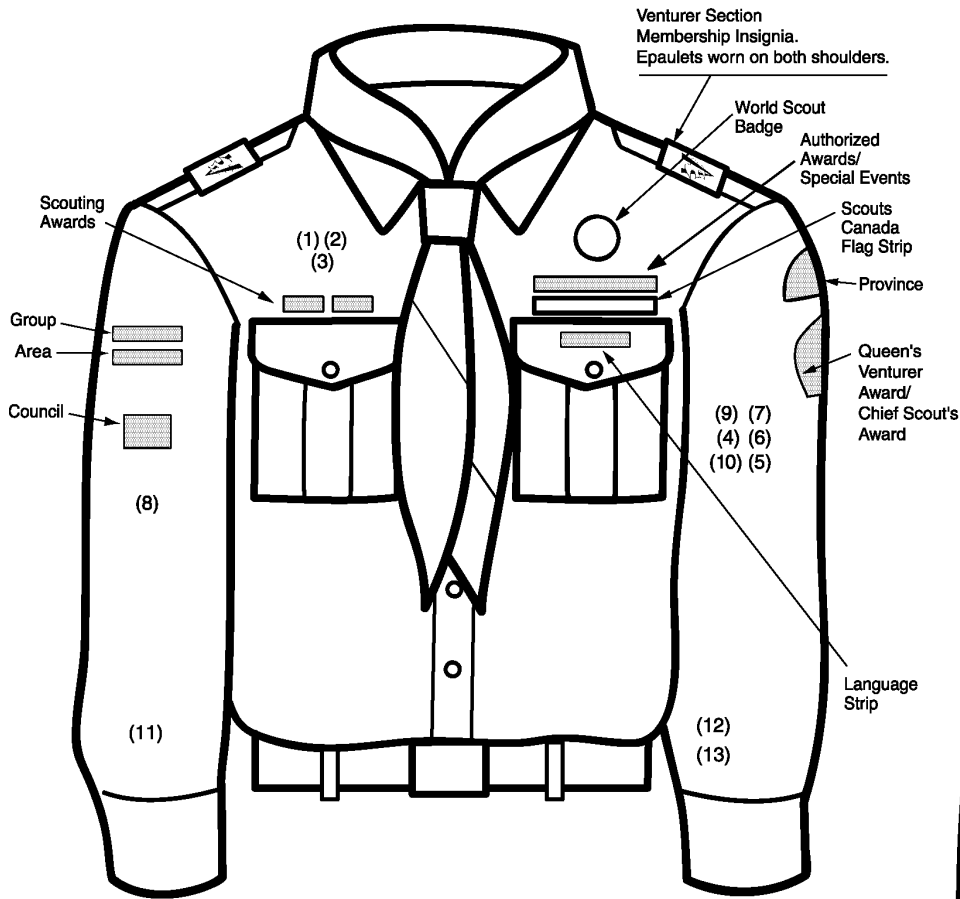


World Conservation Badge is worn on back of Sash 3 cm from top of shoulder seam.

All Season Camper Award is worn on back of Sash below World Conservation Badge.

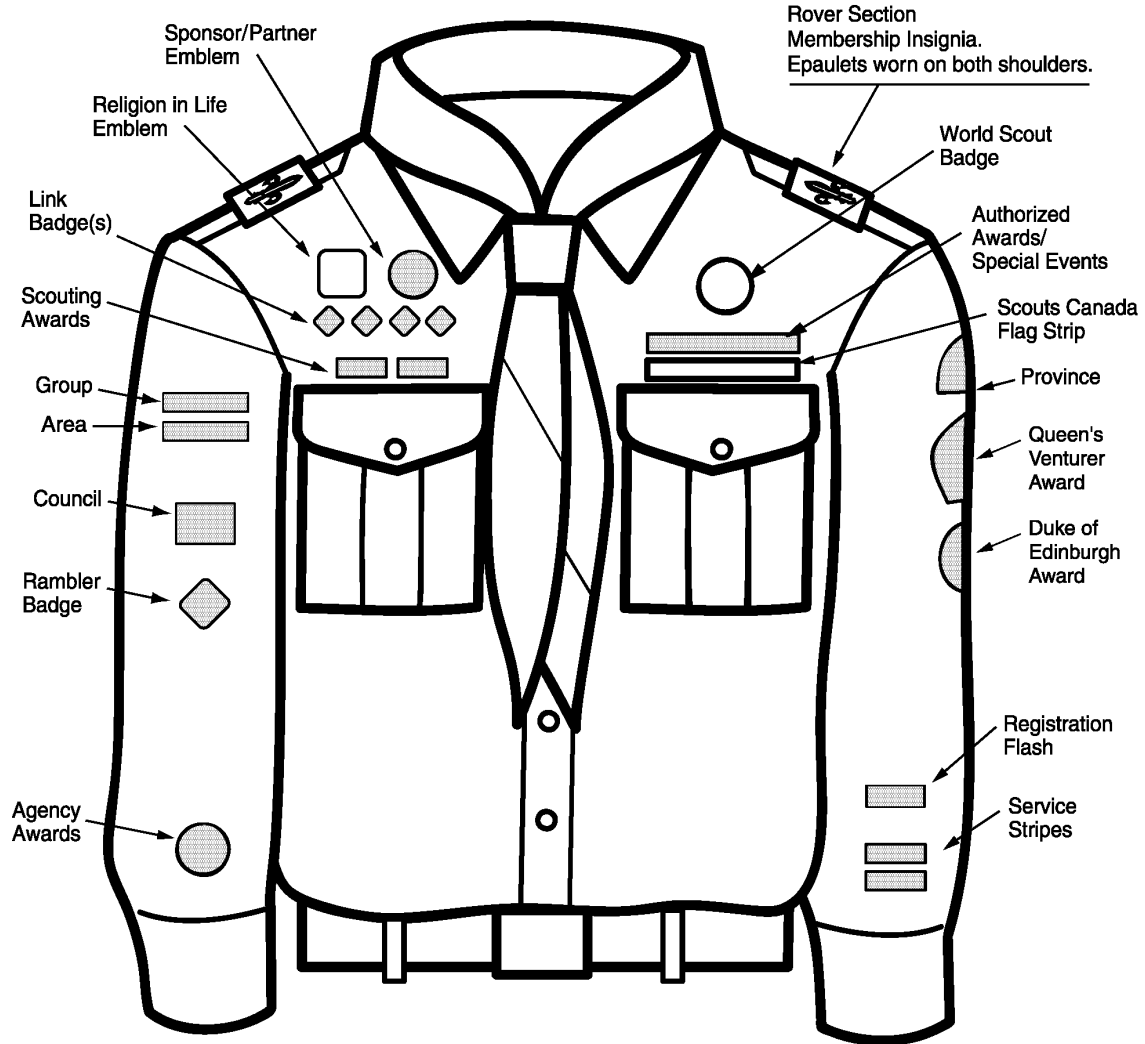
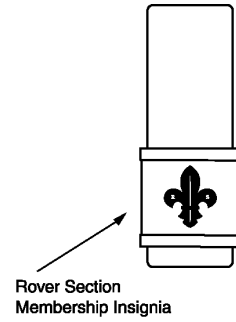
Challenge Badges may be worn on back of Sash below All Season Camper Award.

VENTURER



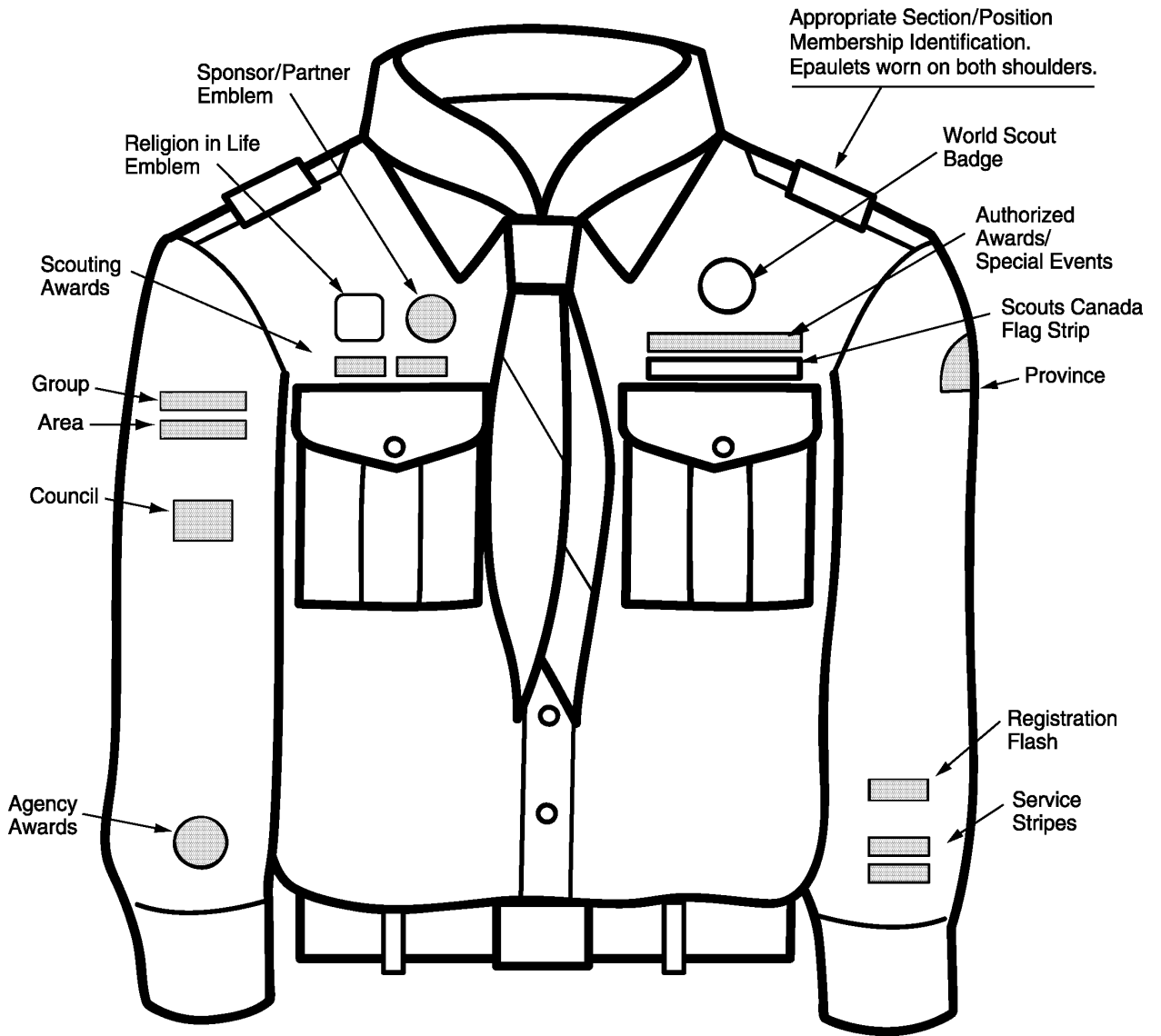
Numbers indicate location of insignia if no sash is worn.

ROVER

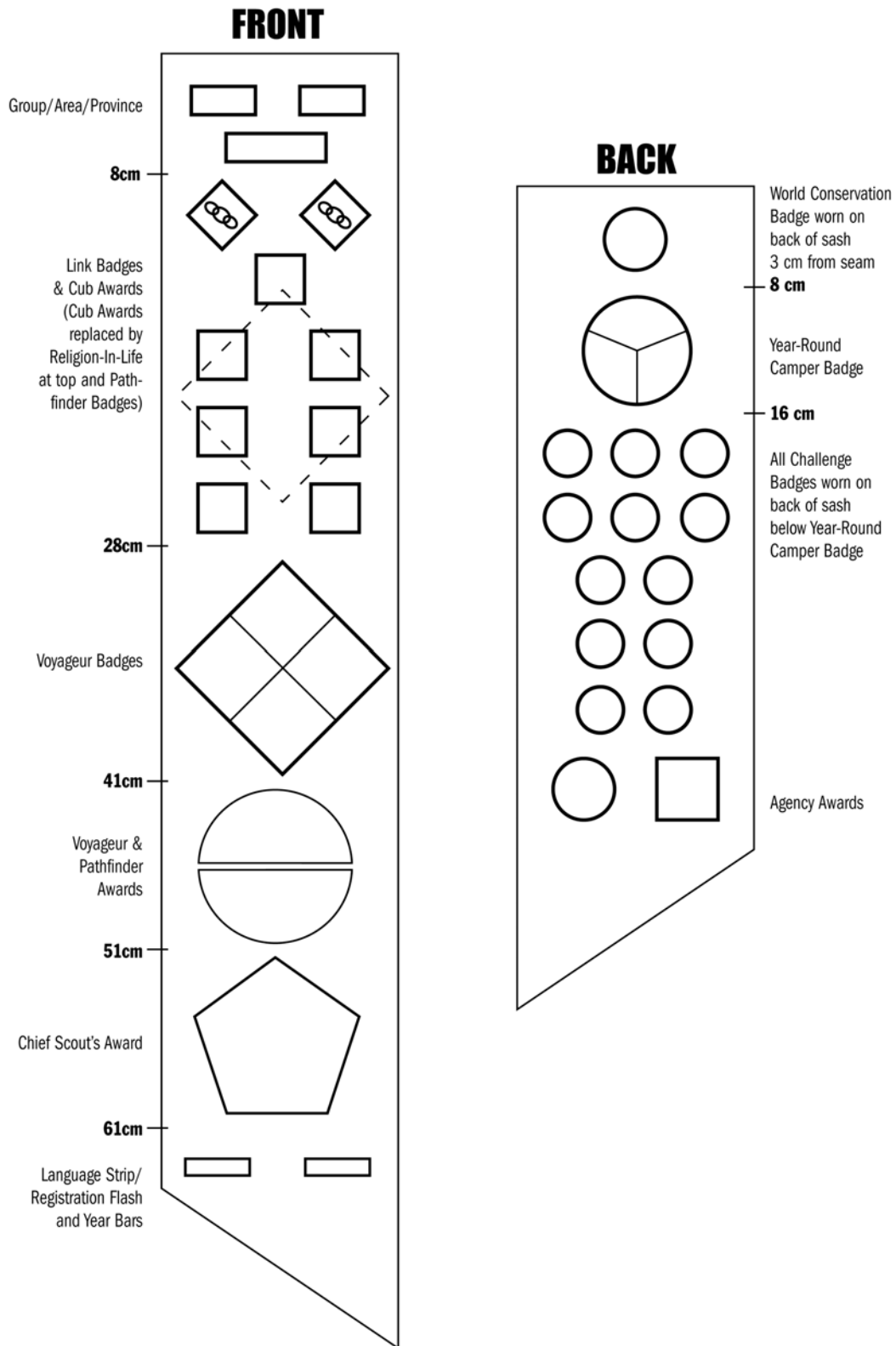


Rover Progress Thong may be worn as an alternative Awards system with crew approval. It is to be worn around left shoulder.

ADULT LEADER



Badge Placement on Sash (New Uniform Option)



8002 – FLAGS

Any of the following may be used:

- The Canadian Flag;
- The Provincial/Territorial Flag.
- Section flags, flags of official design bearing the appropriate symbols and, if desired, the name of the group.

8002.1 – Official Designs are:

Beaver colony flag

— blue field and brown beaver on a white circle and blue lettering.

Wolf Cub pack flag

— yellow field, green wolf head, green lettering.

Scout troop flag

— green field, yellow fleur-de-lis, green lettering.

Sea Scout troop flag

— navy field, white fleur-de-lis, white lettering.

Venturer company flag

— blue field, gold, white and blue symbol, gold lettering.

Rover crew flag

— white field, red cross, yellow fleur-de-lis, green lettering.

World Flag

— purple field, white fleur-de-lis encircled by white rope

Scouts Canada's flag

— white field, Scouts Canada's logo, black lettering

8002.2 – Dedication:

Flags presented to a Group or Section may be dedicated to their use by a fitting ceremony.